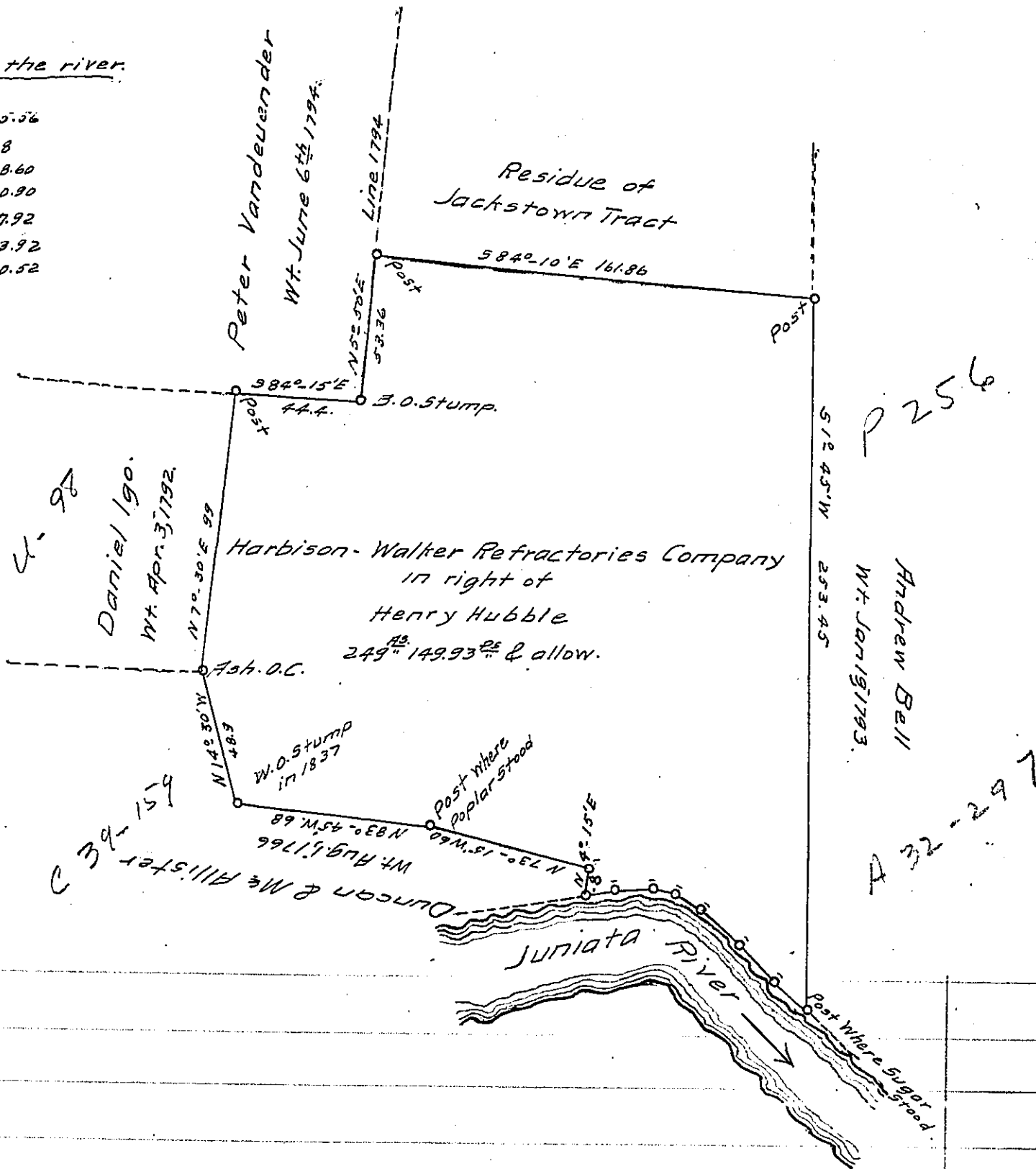


Courses up the river.

- N. 47° - 30' W. 15.56
- N. 43° - 10' W. 18
- N. 27° - 15' W. 18.60
- N. 58° - 45' W. 10.90
- N. 76° - 30' W. 7.92
- N. 87° - 20' W. 13.92
- S. 83° - 00' W. 10.52



A draft of a tract of land situated in what was originally Huntingdon, afterwards Henderson, and now Brady Township, Huntingdon County, Pennsylvania. Containing two hundred and forty nine acres one hundred and forty nine and ninety three hundredth perches.

Warrant issued, in pursuance of an application filed January 28<sup>th</sup> A.D. 1798, on the 6<sup>th</sup> day of May A.D. 1914, to the Harbison-Walker Refractories Company in the right of Henry Hubble, for 250 acres of land improved in June 1792.

Surveyed January 14<sup>th</sup> and March 25<sup>th</sup> 1795, Aug. 25<sup>th</sup> 1837, and the old lines surveyed and remarked this 3<sup>rd</sup> day of July A.D. 1914 in pursuance of the above recited Warrant.

To Hon. Henry Houck  
Sec. of Internal Affairs

C. T. Evans  
County Surveyor.

IN TESTIMONY that the above is a copy of the original remaining on file in the Department of Internal Affairs of Pennsylvania, made conformably to an Act of Assembly approved the 16th day of February, 1833, I have hereunto set my Hand and caused the Seal of said Department to be affixed at Harrisburg, this third day of February 1916.

*Henry Houck*  
Secretary of Internal Affairs.